



Nancy Willard's *Gutenberg's Gift*
Word Find

R	F	K	D	D	E	S	T	M	G	R	A	N	K	G
F	Y	J	H	S	L	Y	A	C	Q	R	B	L	C	U
H	F	O	A	X	P	H	S	Z	T	I	A	A	I	T
T	A	H	P	E	F	S	F	U	W	J	T	A	T	E
N	C	N	M	M	O	Y	S	X	V	K	F	F	S	N
T	V	O	D	S	L	D	F	D	A	I	E	D	G	B
G	L	H	Q	P	N	D	I	A	Y	J	C	W	N	E
D	M	S	S	O	R	T	R	L	L	U	H	X	I	R
P	A	V	M	Z	U	E	S	G	F	M	L	V	S	G
R	A	A	I	W	R	S	S	R	Q	I	E	Z	O	T
B	I	A	O	A	S	W	N	S	T	H	S	B	P	A
D	T	Y	P	E	C	A	B	I	N	E	T	S	M	G
T	S	I	H	D	D	U	B	N	O	R	F	O	O	D
H	E	S	Y	J	R	J	R	J	P	U	C	N	C	Z
F	Z	Z	O	Y	W	J	R	E	P	W	Q	G	M	S

Buddhist
Chase
Composing stick
Diamond Sutra
Gutenberg

Hand-press
Jikji
Quoins
Type cabinets
Type mold

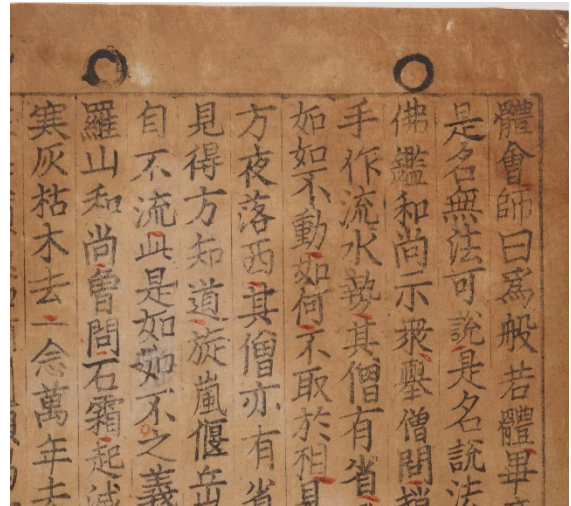
The History of Printing in Five Dates

868

The earliest surviving printed book is a copy of the *Diamond Sutra* (a Buddhist religious text) from 868. This book was printed using hand-carved wood blocks in China.

1377

The date of the earliest surviving book printed in moveable metal type: *Jikji*, a religious book, was published in Heungdeok Temple in Korea.



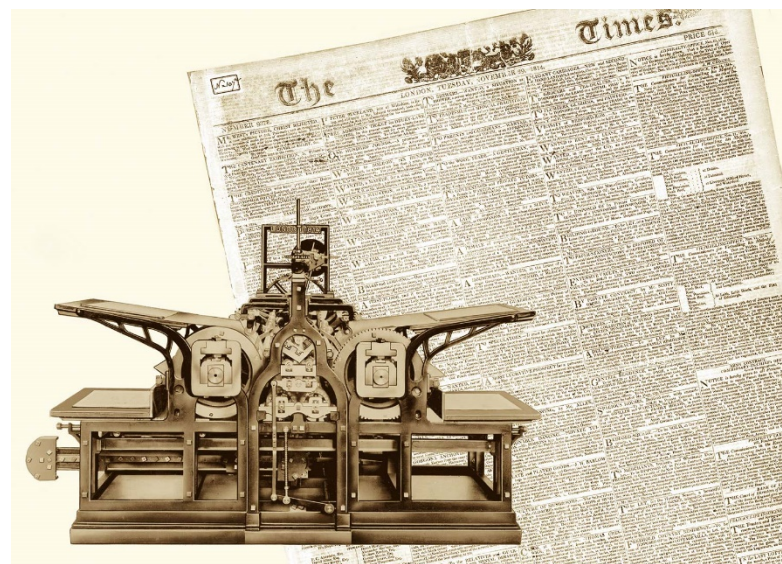
Detail of a page from *Jikji*, the earliest surviving book printed in moveable metal type. National Library of France. Department of Manuscripts, Korean 109.

1455

Johannes Gutenberg invented the wooden printing press and created moveable metal type to print his Bible in the city of Mainz.

1803

Invention of the iron hand-press by the Earl of Stanhope in England.



1814

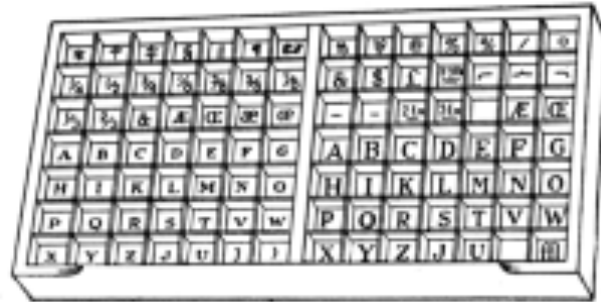
Invention of the steam-powered cylinder printing press by Friedrich Konig and Andreas Bauer. It was used to print the newspaper *The Times* of London.

The 1814 steam-powered cylinder press and a copy of *The Times* of London newspaper. Konig and Bauer.com

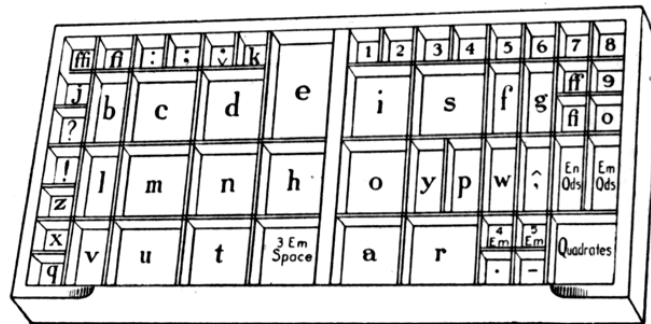
Printing Tools

Type Case

These are type cases. Individual pieces of metal type (called “**sorts**”) are stored in each section of the shallow wooden case. The cases are shelved in wooden cabinets called “type cabinets.”



Upper case



Lower case

Image: A. A. Stewart, *Type Cases and Composing Room Furniture* (2010): <https://www.gutenberg.org/files/31704/31704-h/31704-h.htm>

Composing Stick

A tool used by printers to help organize type sorts in a line. Composing sticks were first made of wood and then later made of metal.

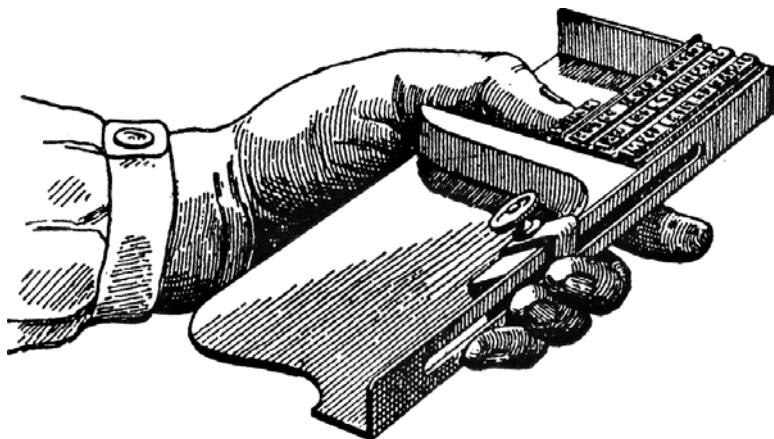


Image: William & Robert Chambers. *Encyclopaedia*. (Philadelphia: J.B. Lippincott & Co., 1881). ClipArt ETC.

Type Mold

Hot liquid type metal was poured into the mold to “cast” an individual piece of type.

Type metal is an alloy (combination) of lead, antimony, and tin.



Image: 1568 illustration of a German type founder pouring type metal into a hand mold (Wikipedia).

Forme of Type

Lines of type are placed and secured in a strong metal frame called a **chase** using a variety of objects called **leading**, **furniture**, and **quoins**. Together, these are called a forme of type.

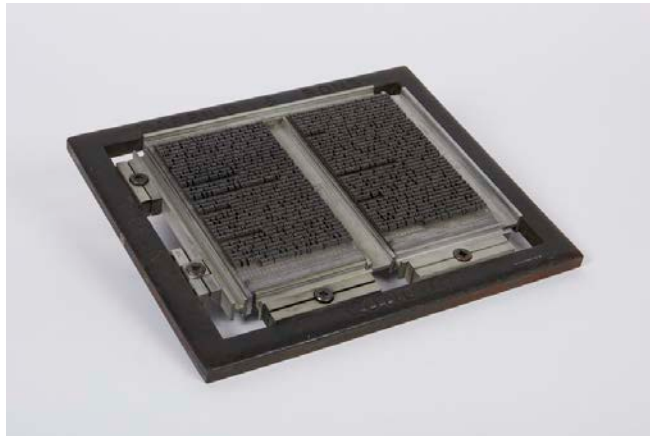


Image: Science Museum Group. Forme of Type Marked 'Harrild & Sons' 'London', 1890-1950. 1973-243/1/1Science Museum Group Collection Online. <https://collection.sciencemuseumgroup.org.uk/objects/c08055258/forme-of-type-marked-harrild-sons-london-1890-1950-type>.

Videos on Printing and Type Casting

“How Gutenberg cast his type” from the Crandall Historical Printing Museum: <https://www.youtube.com/watch?v=SwsrqXmNeCY>

“Printing 101” from the Folger Shakespeare Library:

https://www.youtube.com/watch?v=CN_KhB9SjVs

Constantinople

RBS
RARE BOOK SCHOOL
www.rarebookschool.org

