

# Information Guide | Charlottesville

## Welcome to Rare Book School!

FOR FORTY YEARS, the bibliographical community has been supported and nourished by the work of Rare Book School (RBS). From its tentative beginnings at Columbia University, the School has educated several generations of librarians, collectors, academics, conservators, and booksellers, producing a network of loyal alumni, talented faculty, and dedicated friends around the globe. In the process, it has also earned a reputation as the world's premier institution for the study of bibliography and book history. We are delighted that you will soon be a part of that distinguished tradition, and of our School's promising future. We look forward to welcoming you to Charlottesville.

This *Information Guide* will provide general information about what to expect during your course week. Upon arrival at RBS, you'll also receive a copy of the *Student's Vade Mecum* with additional information to ensure that your stay is as productive and enjoyable as possible. (N.B. Please bring this guide with you when you come to RBS; it contains valuable information not repeated in the *Vade Mecum*.) In the meantime, we eagerly await your arrival, and look forward to another wonderful year!

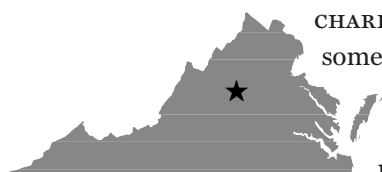
### Contents

WELCOME .....	1
ABOUT CHARLOTTESVILLE .....	1
THE RBS WEEK .....	2
BEFORE YOU ARRIVE .....	4
TRANSPORTATION .....	4
PARKING .....	6
OFF-GROUNDS ACCOMMODATIONS .....	7
STAYING ON GROUNDS .....	8
ON-GROUNDS ACCOMMODATIONS... ..	9
ADVANCE ADVICES.....	11
LOCAL ATTRACTIONS.....	13

### RARE BOOK SCHOOL

University of Virginia  
Post Office Box 400103  
Charlottesville, VA  
22904-4103  
telephone: 434-924-8851  
rbsprograms@virginia.edu  
www.rarebookschool.org

## About Charlottesville



CHARLOTTESVILLE, VIRGINIA, is a city of some 46,000 persons, located approximately 110 miles southwest of Washington, DC, and seventy miles northwest of Richmond.

Situated between the rolling hills of the Virginia Piedmont and the rugged terrain of the Blue Ridge, it also serves as the administrative seat of Albemarle County, a prosperous rural area of outstanding natural beauty.

Quietly cosmopolitan, Charlottesville is notable for its beautiful architecture, excellent restaurants, and marvelous hiking and biking trails, a combination contributing to one of the highest standards of living in the United States. As an intellectual and cultural hub for central Virginia, it has also long been associated with books and book culture: Thomas Jefferson, one of early America's most influential bibliophiles, built his Monticello plantation on a hill just south of town. The city today boasts one of the largest numbers of used and antiquarian bookshops in the state.

Jefferson's influence on Charlottesville is felt most keenly at the University of Virginia, the selective public institution he established in 1819; a UNESCO World Heritage site, his "academical village" is considered a masterpiece of eighteenth-century neoclassical architecture. Home to RBS since 1992, the University currently offers more than fifty bachelor's degrees, ninety-four master's degrees, and doctoral degrees in fifty-five fields.

# The RBS Week

All RBS students are expected to be in attendance and on time for all regularly scheduled classes, labs, and field trips. This is to ensure the quality and community of RBS as a School, and we insist that participants attend all sessions of their courses, unless presented with the most extraordinary of circumstances. Practically speaking, this involves a full-time commitment of 5–6:45 p.m. Sunday, 8:30 a.m.–5 p.m. Monday through Thursday, and 8:30 a.m.–4 p.m. Friday. Please make your travel plans accordingly!

## SUNDAY 8 a.m. **UVA Dormitory Check-in**

Check-in begins at Gibbons House (425 Tree House Drive) for students staying in UVA dormitories and will remain open until 7 p.m. (5 p.m. in August). Contact [rbsprograms@virginia.edu](mailto:rbsprograms@virginia.edu) if you need to check in outside of this time frame and we will arrange to meet you.

## 4:30 p.m. **RBS Walking Tour**

RBS guided walking tour of UVA Central Grounds and the Corner (optional, and weather permitting). Meet on the Lawn side steps of the Rotunda. Look for a tour guide carrying a flag! (Please consult [www.virginia.edu/web-map/](http://www.virginia.edu/web-map/) to better orient yourself.)

## 5 p.m.\* **Student Registration**

RBS students register at the Rotunda—follow the signs. Students will receive the *Student's Vade Mecum* and a name badge. We will also take your picture for our bulletin board. Please do not show up before 5 p.m., as we won't be ready to receive students until then.

*Late arrival:* We strongly suggest attending Sunday night registration, but if you are unable to make it, you will need to register at the Rotunda at 8 a.m. sharp on Monday.

## 5 p.m. **Reception**

A reception, including light refreshments, takes place in the Rotunda Multipurpose Room, coinciding with student registration.

## 6 p.m. **Director's Welcome**

Meet RBS Director Michael F. Suarez, S.J., in the Rotunda's Dome Room.

## 6:40 p.m. **Light Refreshments**

Continue the conversation with RBS staff and faculty and your fellow students in the Rotunda Multipurpose Room, where we will serve light refreshments until 7:15 p.m.. Students are encouraged to sign up for Sunday night small-group dinners at one of the featured restaurants on the Corner. Sign-up sheets will be available at the reception.

## MONDAY 8 a.m.\* **Final Registration**

RBS final registration for all courses (for those who have not already registered on Sunday night) will take place in the Rotunda walkway outside of the Multipurpose Room. .

## 8 a.m. **Breakfast**

RBS serves a breakfast in the Multipurpose Room.

## 8:20 a.m.\* **Classroom Orientation**

All students should report to the Rotunda no later than 8:20 a.m. Monday morning. Instructors lead students to their classrooms.

## 8:30–10 a.m.\* **First Period**

## 10–10:30 a.m. **Morning Break**

Coffee, tea, juice, and other light refreshments served in the Multipurpose Room.

## 10:30–Noon\* **Second Period**

## Noon–1:30 p.m. **Lunch**

Classes break for lunch. Please refer to the Charlottesville *Restaurant Guide* for an extensive survey of nearby options.

## 1:30–3 p.m.\* **Third Period**

## 3–3:30 p.m. **Afternoon Break**

Coffee, tea, soft drinks, and other light refreshments served in the Multipurpose Room.

## 3:30–5 p.m.\* **Fourth Period**

## The RBS Week (continued)

TUESDAY through THURSDAY

8:30–10 a.m.\* **First Period**

10–10:30 a.m. **Morning Break**

10:30–Noon\* **Second Period**

Noon–1:30 p.m. **Lunch**

1:30–3 p.m.\* **Third Period**

3–3:30 p.m. **Afternoon Break**

3:30–5 p.m.\* **Fourth Period**

### Evening Activities

During the week, there are optional evening activities for those interested in taking advantage of them. Mid-week events may include an Exhibition Tour, or course-specific programming, but will vary by session. Please refer to the RBS website for lecture information. For specific event details, see the *Student's Vade Mecum*. Most events are free and open to the public, including the following regularly scheduled activities:

Monday 5:30 p.m. **Evening Lecture**

Wednesday 5:30 p.m. **Evening Lecture**

Thursday 5 p.m. **Booksellers' Night**

On Booksellers' Night, a number of used/antiquarian booksellers in town remain open until around 8 p.m. for the benefit of RBS participants. As there are also several good places to eat downtown, we hope you will combine shop-hopping with dinner, and make a night of it.

FRIDAY

8:30–10 a.m.\* **First Period**

10–10:30 a.m. **Morning Break**

10:30–Noon\* **Second Period**

Noon–2 p.m. **Long Lunch**

Note the longer lunch break. By tradition, students take their instructor(s) to a group lunch on Friday (though you are not obligated to attend). Consult the *Student's Vade Mecum* for restaurants that can accommodate large parties. Advance reservations are strongly recommended.

2–3:40 p.m.\* **Third Period**

3:40 p.m.\* **Course Evaluations**

Students receive course completion certificates and fill out RBS course evaluations.

4–6 p.m. **Farewell Reception/Notions Shop**

Friday afternoon classes will break by 4 p.m. for a final RBS-wide reception, from 4–6 p.m., enlivened by the opening of our Notions Shop. Get your current RBS merchandise and Book Arts Press publications here!

\* *Required activities are noted by asterisk*



*Merchandise from the RBS Notions Shop*

## Before You Arrive

---

### Reading Lists

Most RBS courses have advance reading lists or assignments that RBS instructors expect their students to complete before they arrive. These are outlined at [www.rarebookschool.org/reading/](http://www.rarebookschool.org/reading/).

Students should come to class prepared. Those who have trouble locating required readings might try obtaining them through interlibrary loan (ILL), from used or antiquarian booksellers through the Antiquarian Booksellers Association of America (ABAA), or online via [www.bookfinder.com](http://www.bookfinder.com) or [www.vialibri.net](http://www.vialibri.net).

### Arrival & Departure Logistics

When working out your RBS transportation arrangements, please note that it can be difficult to make the trip to and from Charlottesville in one day. Because we strongly encourage students to attend Sunday night registration and orientation, we suggest coming in on Saturday rather than Sunday, especially if you are new to the area and/or RBS. Staying over Friday night *after* your last day of class is also advised, if you can swing it. Early evening ground and air travel on Fridays is seldom much fun, and northbound traffic on Route 29 (the main road to the Charlottesville airport) between 4 and 6 p.m. on Friday tends to be particularly tedious.

### Problems

Please let one of our staff members know if you encounter problems on any front. If such problems occur before you arrive, write us ([rbsprograms@virginia.edu](mailto:rbsprograms@virginia.edu)) or telephone us (434-924-8851, 8:30 a.m.–5 p.m.; voicemail after hours). If you encounter issues with tuition payments, contact RBS Accounting Specialist Michael Taylor at 434-243-2920, or by email ([michael.taylor@virginia.edu](mailto:michael.taylor@virginia.edu)). During RBS, problems can be handled by reaching out to the RBS staff member closest at hand (look for the blue ribbons on their nametags).

## Transportation

---

### Transportation Strategies

Flying, taking the train, and driving are all available means of getting to Charlottesville. Having a car during the Monday through Friday period of RBS classes is not necessary, and only occasionally convenient.

There are many places to eat within easy walking distance of the University, and Charlottesville boasts both a free trolley service and an affordable bus system that can get you almost anywhere you need to go (see [www.charlottesville.org](http://www.charlottesville.org) for maps and details). There will also be plenty to do on Grounds (the UVA campus), both all day and during the early evening.

For visiting local attractions (e.g., Monticello), a car will come in handy, though there will be little time for such diversions during the week.

### Air Transportation

Use one of the major online discount-airfare services (e.g., Kayak, Expedia) to search for competitive ticket prices. By far the closest airport to UVA is Charlottesville/Albemarle (CHO), just north of town. Regional air connections are usually made through Dulles (IAD) and Charlotte (CLT); there are no direct flights from either Reagan National (DCA) or Richmond (RIC) to Charlottesville.

From CHO there is a \$30 flat rate charge for taxi transportation into Charlottesville (see <https://www.cvilletaxi.com/rates/>). Some local hotels offer courtesy van pickups. Another possibility is to fly into IAD, DCA, or RIC, and rent a car. Unfortunately, other transportation options from these airports to Charlottesville are usually either prohibitively expensive or unpleasant.

## Transportation (continued)

---

### Ground Transportation

*Train.* Amtrak's Crescent line passes through Charlottesville (CVS) daily, as do some Northeast Regional trains. Another train, the Cardinal, passes through town three times each week. The train is likely the most expedient mode of transportation from either DC or Northern Virginia. Consult Amtrak's website or call 1-800-872-7245 for arrival and departure times.

The Charlottesville Amtrak station is located about a half mile from UVA Central Grounds. This is usually a pleasant fifteen-minute walk, but can become grueling depending on the weather and/or your luggage. If you are staying in a local hotel other than the Courtyard Marriott, Graduate, Residence Inn by Marriott Charlottesville Downtown, The Draughtsman, or Hampton Inn & Suites, which are all located nearby, see if your accommodations will provide a shuttle, or call a taxi. Cab fare is usually under \$10 and is worth it, especially if you are staying in the Bond House dormitory, located another quarter mile from the Lawn.

*Bus.* There is at least one Megabus per day from Union Station in Washington, DC, to Barracks Road Shopping Center in Charlottesville (approximately \$37, and 3 hours, each way). From Barracks, please plan to order a cab, rideshare, or take the city bus to UVA grounds. Greyhound also runs a redeye bus from Union Station to the Charlottesville Amtrak station (\$37, 4 hours), and a morning bus from Richmond to Charlottesville (\$25, 1.5 hours). Check Greyhound's website or call 800-231-2222 for fare and schedule information. Not all of these bus routes are direct, however, so be sure to ask about stops and transfers when purchasing your ticket.

Megabus also runs express services between Charlottesville and New York City (<https://us.megabus.com/route-guides/charlottesville-to-new-york-bus>) and between Charlottesville and Philadelphia (<https://us.megabus.com/route-guides/charlottesville-to-philadelphia-bus>). Each service costs approximately \$100 and is expected to take 9 hours and 7 hours respectively.

### Driving

The main north-south highway to (and through) Charlottesville is Route 29; it intersects with Interstate 66 about thirty miles west of Washington, DC, and about eighty miles north of UVA.

The main east-west highway, just south of town, is Interstate 64. Interstate 81 (north-south) lies to the west of Charlottesville on the other side of the Blue Ridge Mountains; it intersects I-64 about thirty-five miles to the west of town.

*GPS.* For driving directions to Charlottesville from any point, use a GPS system or one of the popular mapping websites (e.g., Google Maps, MapQuest). For your destination, enter 105 Emmet Street North—the intersection of Route 29 (Emmet Street) and Business Route 250 (Ivy Road). Once you arrive there, turn east onto University Avenue. UVA is visible on both sides of the street. To drive by the University's Central Grounds, proceed up University Avenue past the tennis courts. The Rotunda will be visible just beyond, on the right. For parking information, see below.

*Scenic Routes.* Both Shenandoah National Park and the George Washington National Forest begin about twenty miles to the west of Charlottesville on Interstate 64. One option is to drive south to I-64 on Skyline Drive from Front Royal, Virginia, or north to I-64 on the Blue Ridge Parkway from North Carolina. Both offer breathtaking views of some of the oldest mountain ranges in the world, as well as abundant opportunities for viewing wildlife. Note, however, that speed limits on both roads are restricted (35 mph on Skyline, 45 mph or lower on the Parkway), and travel times can be long.

## Parking

*Parking in University Garages and Lots.* This year, to simplify the process, RBS will handle access to parking on UVA Central Grounds for RBS students. If you would like to make a parking reservation, please contact the RBS Programs staff at [rbsprograms@virginia.edu](mailto:rbsprograms@virginia.edu) *no later than three weeks prior to the start of your RBS session.* Please include your name, license plate number and state, and your phone number. Additionally, please specify whether you would like to park in the Bond House parking garage (beneath the building) for those staying in the dormitory, or in Culbreth Road garage for those staying off-Grounds or on the Lawn. Permits will be virtual and connected to students' license plate information. As noted below, parking in a University lot for which you do not have reserved parking can result in a citation. RBS covers the cost of these parking permits, but if you would like to make a \$20 donation to the school, you may do so at <https://www.givecampus.com/campaigns/19549/donations/new>.

*Sunday Parking.* If you are staying in the Bond House dorm, park at Bond House when you check in. Most street parking around UVA does not require a permit on Sundays, but certain key locations are permit-only at all times. Those staying on the Lawn should ask for information on where to park (i.e., the alleys) while unloading.

*Parking in the University Neighborhood.* Single-day on-street parking in the immediate precincts of the University is fairly limited (many spaces require a resident's permit). The best places are on the side streets off Rugby Road to the north of Beta Bridge (recognizable by the many layers of paint deposited on it by students).

The University places many restrictions on the use of its parking lots, although some allow permit-less parking after 5 p.m. and on weekends.

Park only in lots for which you have registered for parking through the provided promo code, or you are likely to get a ticket (fines are \$50 and up).

*Parking in Charlottesville Generally.* There is free on-street parking in central Charlottesville, generally with a two-hour limit. Overtime tickets are \$20 if paid immediately, \$40 after ninety-six hours. Charlottesville is a well-run city, and aggressively pursues non-payers. **WARNING:** If you park in a fire lane or other street area that must be kept clear at all times, you may be towed in as little as twenty minutes.

Downtown, the most convenient places to park are the (paid) public parking garages on East Market Street between 5th and 6th Streets NE, and on Water Street between 2nd and 4th Streets SE. In both garages, the first hour is free. Many downtown restaurants and theaters will also validate your parking pass, although they will require a purchase before doing so.

### If you get towed

If your car has been towed, there are two possibilities: (1) the University had it towed; or (2) the Charlottesville police department had it towed.

In the former case, call the Department of Parking & Transportation Services (434-924-7231) for more information, as the University uses a number of different towing companies. If Parking & Transportation did not tow it, or if you get no answer at this number, call the University Police (434-924-7166).

In the latter case, call Charlottesville Wrecker Service, the towing company the city police department uses exclusively (434-295-1107).

## Off-Grounds Accommodations

---

### Bed-and-Breakfasts

If you like bed-and-breakfast accommodations, telephone the local Guest House Reservation Services (434-979-7264) for a brochure and advice, or visit their website at <https://www.vaguesthouses.com/>. There are a couple of B&Bs within walking distance of Alderman, including the Dinsmore House Inn (434-974-4663), which has received good reviews from previous RBS attendants, and Oakhurst Inn (434-872-0100). The latter is located just south of Central Grounds.

Stay Charlottesville (888-977-0442) offers elegant, fully furnished carriage houses, condos, apartments, and historical homes throughout the town and surrounding country. Their website is at <https://www.stay-charlottesville.com/>.

### Hotels

In our experience, the most reliable of the hotels within easy walking distance of Grounds are the Courtyard by Marriott (434-977-1700), the Graduate Charlottesville (434-295-4333), and Hampton Inn & Suites (434-923-8600) located on West Main Street. If you decide to stay at a Charlottesville hotel be sure to ask if they have a University of Virginia rate—many local hotels do.

n.b. Hotel accommodations within walking distance of Grounds are *very limited* during the first and second course week owing to the University's back-to-back Reunion Weekend events. We *strongly encourage* you to book your hotel accommodations right away or to consider the dorm spaces and hotel blocks that RBS has reserved.

This year, RBS has reserved a block of rooms at both the Residence Inn Charlottesville Downtown (315 W. Main St.) and the Courtyard by Marriott (1201 W Main Street). Located between UVA and the Downtown Mall, the Residence Inn is approximately 20 min away from the Rotunda on the free Trolley line. If you would like to reserve a room, please use the following links:

- **June 4–10:** <https://www.marriott.com/event-reservations/reservation-link.mi?id=1677867426996&key=GRP&app=resvlink>
- **June 11–17:** <https://www.marriott.com/event-reservations/reservation-link.mi?id=1677867576957&key=GRP&app=resvlink>
- **July 9–15:** <https://www.marriott.com/event-reservations/reservation-link.mi?id=1677867755576&key=GRP&app=resvlink>
- **July 23–29:** <https://www.marriott.com/event-reservations/reservation-link.mi?id=1677867901736&key=GRP&app=resvlink>
- **July 30–Aug 5:** <https://www.marriott.com/event-reservations/reservation-link.mi?id=1677868025222&key=GRP&app=resvlink>

n.b. Reservations for these rooms must be made 30 days in advance of each session.

Information for booking a room at the Courtyard by Marriott (1201 W Main Street) will be provided as soon as it becomes available.

# Staying On Grounds

---

## Whom to Contact

UVA Housing & Residence Life directly manages University housing for RBS participants through its Conferences@UVA branch, located at Gibbons House (425 Treehouse Drive) off of Alderman Road. Conferences@UVA is open 8 a.m.–7 p.m. (daily), except during August (8 a.m.–5 p.m.) and can be reached during business hours at 434-924-4479 or by email at conferenceservices@virginia.edu. If you need to check in outside of the standard hours listed above, please contact rbsprograms@virginia.edu in advance to arrange for someone to meet you at the dormitory. If something is broken in your room or there are *any other issues*, please call Conferences@UVA. If you do not call them, they will not know there is a problem. If you need something that Conferences@UVA cannot provide, contact the RBS Programs staff at rbsprograms@virginia.edu or 434-924-8851. If you are locked out of Bond House, or have trouble with your keycard, call Systems Control (434-924-3053).

## Online Housing Request Form

UVA Conference Services has provided an online registration portal for accommodations on UVA Grounds, which you may access using the following link: <https://conferences.virginia.edu/customlink/RBS>.

Payment via credit card is due at the time of booking. You must use the relevant code for your session week when registering for your room:

- June 4–10: RBSUVA1
- June 11–17: RBSUVA2
- July 9–15: RBSUVA3
- July 23–29: RBSUVA4
- July 30–Aug 5: RBSUVA5

The deadline for housing requests falls two weeks before each session begins; after this date housing cannot be guaranteed. Conferences@UVA will do its best to accommodate last-minute housing requests and changes, but it cannot create space where there isn't any; please let them know your requirements as soon as possible! If you are attending back-to-back RBS sessions and wish to remain in the same room for the duration of your stay, indicate this in the special request field when booking or call Conferences@UVA; otherwise, you may be required to switch rooms.

The online form will accommodate most participants' needs; however, if you have special requests (e.g., if you need to add an extra night to your stay), please contact Conferences@UVA by email (conferences@virginia.edu). Should you require disability-related or medical accommodation during your stay for Rare Book School, please contact Conference Services (434-924-4479).



## On-Grounds Accommodations

---

There are two on-Grounds residence options available depending on the session dates: Bond House and the Lawn. Both are within walking distance of the Rotunda and Harrison/Small, where Rare Book School's courses will be held this year. Bond House is air-conditioned (you are advised to bring an extra blanket), while the Lawn has recently been decked out with the addition of new portable air conditioning units. Unfortunately, the Lawn is not available during the first two weeks of class (5-10 June and 12-17 June), owing to two weekends of UVA Reunions. Please be advised that there are usually construction projects on the Lawn during the summers, and thus there will be construction noise.

N.B. Nightly rates noted below include the pro-rated cost of a linen packet, which is included in the total weekly rate listed on the Conference Services registration website. A sales tax of 5.3% will also be added to your reservation. Be aware that the linen packet includes compostable sheets. We recommend that you bring your own set of sheets. See below for information about the bed sizes available. No towels are provided.

### Bond House

Rare Book School students staying at Bond House will be housed privately in single rooms. The rooms are arranged in apartment-style suites with four single rooms sharing two full bathrooms, a full kitchen (no kitchen ware will be provided), and sitting area. Each bedroom door locks. Students staying in Bond House will be grouped by gender. Bond House is on Brandon Avenue, about a 10-minute walk to the Lawn.

All bedrooms have one double bed (full mattress size), a desk, a dresser, and a small closet, and each guest will have their room to themselves. (Non-RBS participants are not permitted to stay in the dormitories.) Rooms are not equipped with hangers, irons, ironing boards, hair dryers, or lamps (overhead lighting only). Participants should plan to bring their own personal toiletry items, including a towel, shampoo, handsoap, &c. For more information, please visit the [Conferences@UVA](mailto:Conferences@UVA) website.

It bears repeating that Bond House is air-conditioned, and past RBS students have found the dormitories on Grounds very cold, especially at night. If you get cold easily, bring a warm extra blanket from home. RBS advises packing a few extra shirts in case of spikes in the weather.

If you are locked out of Bond House, or have trouble with your keycard, call Systems Control (434-924-3053).

RATES: Bond House rooms are \$48 per night (including linen packet fee).

## On-Grounds Accommodations (cont'd)

---

### The Lawn

During July and August, RBS students are able to reserve housing on the Lawn in buildings designed by Thomas Jefferson. Rooms on the Lawn are newly equipped with portable air conditioning units. This is an important detail, as summer days in Virginia tend to be hot and humid, though evening breezes from the Blue Ridge can help. Students may also wish to purchase box fans from the CVS on the Corner (1417 25 University Ave.).

All rooms contain sinks with hot and cold water, as well as a small refrigerator, a desk with chair, rocking chair, and fireplace. Please note that bathrooms are not private and are a short walk outside, through open-air archways to areas behind and under the rooms. There are four bathrooms in all: one each for men and women on either side of the Lawn. Conferences@UVA groups Lawn residents so that they are as close as possible to the appropriate bathroom facilities. For more information about the Lawn rooms, please visit the Conferences@UVA website. Please note that Lawn rooms will not be available 5-10 June and 12-17 June.

RATES: Lawn rooms are \$45 per night (including linen packet fee).

N.B. : All Lawn rooms have a day bed under the lofted extra-long twin bed with an extra thick mattress (if you prefer not to sleep aloft).

### Common Amenities

All dormitory beds are furnished with a pillow and blanket. You will receive a linen packet (price included in your reservation), which provides flat and fitted bed sheets of the appropriate size, one pillow, and one blanket. Again, we recommend that you bring your own sheets if you can. Towels, soaps (including handsoap), shampoo, clothes hangers, hairdryers, and other amenities regularly furnished by hotels are not provided. UVA wifi is available in all dormitories.

Please note that there will be no housekeeping services during the week. Guests are responsible for removing their own bedroom trash to the appropriate dumpsters during their stay and upon vacating, and will be given instructions upon arrival.

Bond House suites include a kitchen with a refrigerator, stove, oven, and microwave oven; guests are responsible for providing their own utensils and dishes and cleaning up after themselves.

### Troubleshooting

If there is a problem in or around your room, please call Conferences@UVA (434-924-4479) right away. You may also reach Conferences@UVA by emailing conferenceservices@virginia.edu. If you need something that Conferences@UVA cannot provide, please check in with the RBS Program Staff, rbsprograms@virginia.edu, or call 434-924-8851.

## Advance Advices

---

### What to Bring

Before leaving home, check both your course homepage and the reading list for specific instructions on what to bring to class. It is not always necessary to bring copies of your advance reading, although you may choose to do so. Previous course evaluations, available online, may also contain useful tips on what to bring.

RBS participants are required to come to class on time. If you wish to take notes, plan accordingly. Pencils, paper, and other supplies are available nearby at the UVA bookstore. You may need to bring a computer; consult your course description for more information. UVA is part of the EDUROAM wireless network. If you are part of an institution that subscribes to EDUROAM, please make sure to register for the service before leaving home to ensure access on arrival.

A light rain jacket (and/or umbrella) is useful. Air-conditioning can make RBS classrooms quite cool, so you may wish to bring a sweater as well. If you're staying in dormitory housing, please refer to pages 8–10 for details about what you can expect (or not expect) from your room.

### Childcare & Lactation

Our students who are new parents have reported that balancing parenting with childcare can be challenging during the intensive RBS course week. Parents traveling solo with infants have sometimes consulted Care.com or the Charlottesville Area Childcare Network group on Facebook to arrange for local childcare assistance. We recommend that you make your arrangements assuming that you will need assistance for the full course day during the week. Parents who are nursing may have their infants and childcare providers meet them during the breaks between classes to nurse.

There will be a lactation room situated in close proximity to our break spaces, and we can arrange for refrigerated storage or ice if needed. If you need access to the lactation room, or will require other accommodations related to nursing infants, please submit an Accessibility Accommodations Request form in your myRBS profile. If the duration of our break times does not align well with the time you need for expression, we recommend that you alert your faculty to the possibility that you may be unavoidably delayed returning from the breaks. Please contact us at [rbsprograms@virginia.edu](mailto:rbsprograms@virginia.edu) if you have any questions about available accommodations.

You're welcome to bring children of any age to the opening reception on Sunday or the farewell reception on Friday, but we ask that you try to avoid bringing toddlers and older children to the breaks. Please be aware that if masks are required at our events based on the current COVID-19 transmission level, this requirement will include children aged two and above, per CDC recommendations.

Though guests of RBS participants cannot stay in UVA dorms, they are welcome to visit UVA Grounds, which include many gardens and buildings accessible to the public. The Charlottesville Visitors Bureau can provide information about child-friendly area parks, museums, and other activities for you to share with those who are caring for your children while you are in class: <https://www.visitcharlottesville.org/things-to-do/family-fun/>.

## Advance Advices (cont'd).

### Connecting to the Internet

Guest access to the UVA computing network is available for RBS participants through two options: *Public Computing Clusters*. Public computer terminals are available Clemons Library. Library guests must obtain a temporary access card from the front desk before accessing any of the machines.

*Personal Computer*. At the Sunday night registration you will receive the *Getting Connected* guide, which contains information on how to access the UVA wireless network. If you need internet access prior to registration (i.e., the weekend before your course begins), contact [rbsprograms@virginia.edu](mailto:rbsprograms@virginia.edu) for an early copy of the guide.

Wireless access is available in most public study areas on Grounds and in all dormitories.

### Guests

You are welcome to invite guests to attend all RBS lectures and social functions (Sunday walking tour, Book-sellers' Night, Friday farewell reception).

### Privacy

RBS publishes a list of its participating students in the *Student's Vade Mecum*. If you do not want your work information or email address to appear there, please indicate this in your myRBS profile at least three weeks before your course begins.

### Library Privileges

RBS participants may use UVA's libraries during their stay here. To register for privileges, present a current photo ID at any UVA Library circulation desk. For hours, consult [www.lib.virginia.edu/hours](http://www.lib.virginia.edu/hours).

### Exercise & Gym Privileges

For a description of the fitness facilities available to guests, visit [www.virginia.edu/ims/facilities/](http://www.virginia.edu/ims/facilities/). Use of the facilities requires the purchase of a weekly membership. The business office, where you can purchase membership, is located on the second floor of the Aquatic & Fitness Center (450 Whitehead Road).

### Pharmacies & Medical Facilities

*Nearest pharmacy*. CVS (1417 University Avenue, on the Corner; 434-244-4028). The UVA Bookstore sells medical and personal sundries, as does Cohn's on the Corner (1611 University Avenue, 434-977-1986).

*Nearest hospital emergency room*. UVA Hospital (1215 Lee Street; 434-924-0000, or dial 911).

### Cabs & Ridesharing

The best way to get a cab in this area is to call for one. Trusted local companies include Yellow Cab (434-295-4131) and Carter's Taxi (434-981-0170).

Cabs are almost always available at the airport; if not, phone for one. From CHO there is a \$30 flat rate charge for transportation into Charlottesville.

Both Uber and Lyft ridesharing apps are actively used in Charlottesville

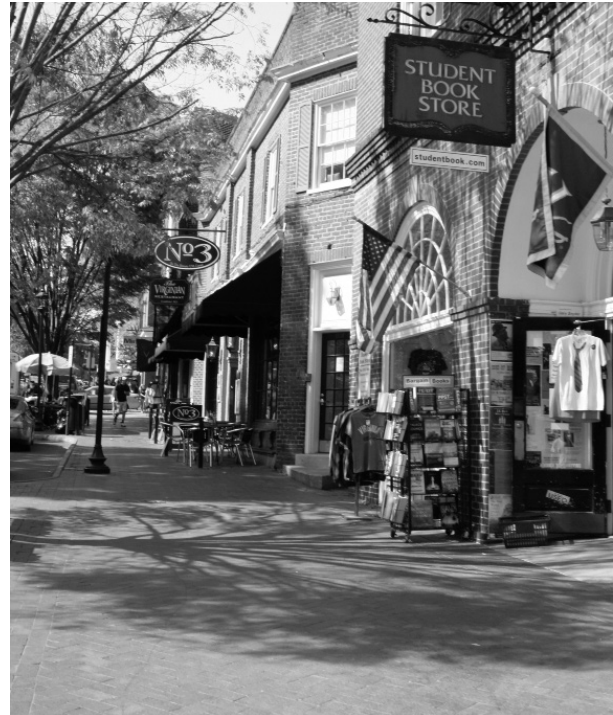
## Local Attractions

Your RBS week will no doubt be busy, so if you'd like to spend some time exploring the Charlottesville area, we suggest budgeting a couple of days before or after your course week.

*Historical attractions.* Albemarle County boasts two presidential homes (Jefferson's Monticello and Monroe's Highland); two additional ones (Madison's Montpelier and Woodrow Wilson's birthplace) are located in nearby Orange County and Staunton, respectively. Other nearby historical attractions include the Frontier Culture Museum in Staunton (30 miles west; 540-332-7850; [www.frontiermuseum.org](http://www.frontiermuseum.org)) and Colonial Williamsburg (110 miles east; 855-771-3290 (Visitor's Center); [www.colonialwilliamsburg.com](http://www.colonialwilliamsburg.com)).

*Monticello.* Jefferson's architectural masterpiece sits on a minor peak in the Southwest Mountains, about three miles south of University Grounds. With half a million visitors a year, Monticello is the third or fourth most frequently visited house in America—and with good reason. The house and its grounds are well run and beautifully interpreted by the Thomas Jefferson Memorial Foundation, a private non-profit. For more information, visit [www.monticello.org](http://www.monticello.org).

*Arts.* For a town of its size, Charlottesville has a robust art scene, including several small galleries (many of which are situated on or near the Downtown Mall), a handful of festivals, a drama venue ([www.livearts.org](http://www.livearts.org)), several music venues, and more. Consult the city's website for more information.



The Corner, near UVA Central Grounds

*Antiques.* Albemarle and nearby counties are a heaven for antique shoppers. Ask us for the name of our local antiques maven, who will gladly discuss your options!

*The great outdoors.* Situated between the rolling hills of the Virginia Piedmont and the dramatic topography of the Blue Ridge Mountains, Charlottesville boasts some of the best scenery in the East. While the Appalachian Trail runs through nearby Shenandoah National Park and the George Washington National Forest, both less than a half hour away, less ambitious hikers might want to try the Rivanna Trail, a twenty-mile scenic footpath encircling the city ([www.rivannatrails.org](http://www.rivannatrails.org)).

Sparsely populated Highland County (sixty miles west) enjoys the highest net elevation of any county east of the the Mississippi, as well as gorgeous valleys, trout streams, wildlife management areas, and numerous hiking trails. Monterey, its charming county seat, has barely been touched by tourism. (In Virginia, this means fewer than one antique shop per block.)